



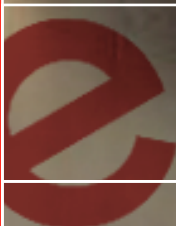
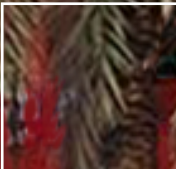
Universidad  
Europea VALENCIA

Undergraduate  
programmes

# Academic Fees.

New enrolments.  
25-26

Go beyond



# Study Place reservation Fee table Undergraduate programmes New enrolments.

## New enrolments. Academic year 2025/26.

This document informs of the fees and payment methods of the Universidad Europea de Valencia for the academic year 25/26.

All new enrolments to the Universidad Europea de Valencia are required to pay: study place reservation fee, opening of student file fee and tuition fee.

### STUDY PLACE RESERVATION FEE.

The enrolment fee implies that the student confirms that they are willing to take the university place and would like to continue with the enrolment process, thus ensuring a place in the selected degree programme.


The payment of the place enrolment fee must be made before enrolment takes place.

The amount will vary according the chosen Degree (see fees table).

After receiving the notification of the admission at the Universidad Europea de Valencia you must pay the enrolment fee via one of these options:

- **Credit Card:** it is the fastest option for enrolment.
- **Direct debit.**
- **Online transfer.**

## Admissions Department.

 Universidad Europea de Valencia. Edificio A  
Paseo de la Alameda, 7 | 46010 Valencia.

 [ads.valencia@universidadeuropea.es](mailto:ads.valencia@universidadeuropea.es)

### OPENING OF STUDENT FILE.

The opening of a student file is a compulsory administrative procedure that must be carried out for all new students who enter the Universidad Europea de Valencia in order to be enrolled in the University. This administrative procedure carries a charge of 550€.

### TUITION FEE.

The yearly tuition fee is calculated by multiplying the number of credits/ECTS in which the student enrolls by the cost per credit/ECTS, with the exception of those courses with a fixed price.



**In case of any discrepancy with the information provided by an advisor, consult University Policy.**

# Study place reservation Fee table

## Undergraduate programmes New enrolments.

### Options of tuition fee payment.

#### RESERVATION FEE PAYMENT.

**Annual payment:** a single payment of the total tuition fee cost. Bank transfer directly to the designated bank account:

- For students enrolled before September 1, the payment must be made before September 1.
- For students enrolled from September 1 onwards, payment must be made within the following 5 days of enrolment.

This method of payment does not exclude the student from the submission of a completed direct debit form.

**Monthly payment:** equal monthly installments. The number of months is based on the start of the first subject and the end of the final subject, as long as the teaching is continuous.

**Deferred Monthly Payment:** monthly payments until August. Possibility of deferring your payments until August. Applicable to Degree courses, not including Adaptation Courses, pre-Degree courses, students in the final year, nor students with discontinuous teaching programs.

#### PAYMENT METHODS.

**Direct Debit:** each month, Universidad Europea de Valencia will send the payment request to the bank account provided by the student according to the selected payment method.


**Flywire payment:** for Students who cannot open a national bank account or SEPA (Single Euro Payment Area).

#### RECOGNITION OF CREDITS.

In the case of recognizing credits for the Global Bachelor's Degree in Business Administration and Entrepreneurship, there will be a charge of 40€ per recognized credit.

The credits that are recognized in other official university degree programs do not carry a charge and will be 100% deducted from the enrollment fee.

### Admissions Department.

 Universidad Europea de Valencia. Edificio A  
Paseo de la Alameda, 7 | 46010 Valencia.

 [ads.valencia@universidadeuropea.es](mailto:ads.valencia@universidadeuropea.es)



**In case of any discrepancy with the information provided by an advisor, consult University Policy.**

Pursuant to article 20.9 of Law 37/1992, of December 28, on Value Added Tax, the amounts paid to the University are exempt from VAT. In the event that the legislation in force declares the tax applicable and not exempt from VAT, the University will add the corresponding enforceable VAT to said amounts.



**Study Place reservation fee table Undergraduate programmes**

Simulation of academic fees for the 1st full academic year.

Valencia Alicante Language	Program	Study Place	ECTS	Nº de ECTS	Tuition	Tuition	Tuition	Total Price 25/26	
		Reservation fee 25/26	Price 25/26		25/26	10 monthly Instalments	12 monthly Instalments		
<b>STEAM</b>									
x	ES	Doble titulación Grado en Ingeniería de Organización Industrial + Grado en ADE	1.200 €	131 €	362	9.432 €	943,2 €	786 €	10.632 €
x	ES	Doble titulación Grado en Física + Grado en Ciencia de Datos	1.200 €	130 €	384	9.945 €	994,5 €	828,75 €	11.145 €
x	ES	Grado en Ciencia de Datos	1.200 €	131 €	240	7.860 €	786 €	655 €	9.060 €
x	ES	Grado en Diseño Gráfico y Tecnologías Creativas	1.200 €	131 €	240	7.860 €	786 €	655 €	9.060 €
x	ES	Grado en Física	1.200 €	131 €	240	7.860 €	786 €	655 €	9.060 €
x	ES	Grado en Ingeniería de Organización Industrial	1.200 €	131 €	240	7.860 €	786 €	655 €	9.060 €
<b>Health Science</b>									
x	ES	Grado en Biomedicina	1.200 €	142 €	240	8.520 €	852 €	710 €	9.720 €
x	ES	Grado en Biotecnología	1.200 €	135 €	240	8.100 €	810 €	675 €	9.300 €
x	ENG	Bachelor's Degree in Biotechnology	2.200 €	155 €	240	9.300 €	930 €	775 €	11.500 €
x	x	ENG Bachelor's Degree in Psychology	2.200 €	188 €	240	11.280 €	1.128 €	940 €	13.480 €
x	x	ES Grado en Enfermería	1.200 €	147 €	240	8.820 €	882 €	735 €	10.020 €
x	x	ES Grado en Fisioterapia	1.200 €	147 €	240	8.820 €	882 €	735 €	10.020 €
x	x	ES Grado en Odontología	2.000 €	280 €	300	16.800 €	1.680 €	1.400 €	18.800 €
x	x	ENG Degree in Dentistry	2.500 €	359 €	300	21.540 €	2.154 €	1.795 €	24.040 €
x	x	ES Grado en Psicología	1.200 €	132 €	240	7.920 €	792 €	660 €	9.120 €
<b>Social Science</b>									
x	ES	Doble titulación Grado en Administración y Dirección de Empresas (ADE) + Grado en Marketing	1.200 €	131 €	318	8.253 €	825,3 €	687,75 €	9.453 €
x	ENG	Bachelor's Double Degree in Business Management and Entrepreneurship & Marketing	1.200 €	179 €	318	11.277 €	1.127,7€	939,75 €	12.477 €
x	ES	Doble titulación Grado en Administración y Dirección de Empresas (ADE) + Grado en Derecho	1.200 €	127 €	396	9.906 €	990,6 €	825,5 €	11.106 €
x	ES	Doble titulación Grado en Derecho + Grado en Criminología	1.200 €	127 €	395	9.906 €	990,6 €	825,5 €	11.106 €
x	ES	Doble titulación Grado en Criminología + Grado en Psicología	1.200 €	127 €	399	9.144 €	914,4 €	762 €	10.344 €
x	ES / ENG	Doble titulación Grado en Derecho + Grado en Relaciones Internacionales	1.200 €	145€	375	11.310 €	1.131€	942,5€	12.510 €
x	ES	Grado en Administración y Dirección de Empresas (ADE)	1.200 €	131€	240	7.860 €	786 €	655 €	9.060 €
x	ENG	Global Bachelor's Degree in Business Management & Entrepreneurship	1.200 €	187 €	240	11.220 €	1.122 €	935 €	12.420 €
x	ES	Grado en Criminología	1.200 €	131€	240	7.860 €	786 €	655 €	9.060 €
x	ES	Grado en Derecho	1.200 €	131€	240	7.860 €	786 €	655 €	9.060 €
x	ENG	Bachelor's Degree in Tourism & Leisure Management	1.200 €	151 €	240	9.060 €	906 €	755 €	10.260 €
x	ES	Grado en Marketing	1.200 €	135 €	240	8.100 €	810 €	675 €	9.300 €
x	ENG	Bachelor's Degree in Marketing	1.200 €	187 €	240	11.220 €	1.122 €	935 €	12.420 €
x	ENG	Global Bachelor's Degree in International Relations	1.200 €	187 €	240	11.220 €	1.122 €	935 €	12.420 €
x	ES / ENG	Grado en Traducción y Comunicación Intercultural	1.200 €	151 €	240	9.060 €	906 €	755 €	10.260 €

\*TOTAL: no incluye la Apertura de Expediente.

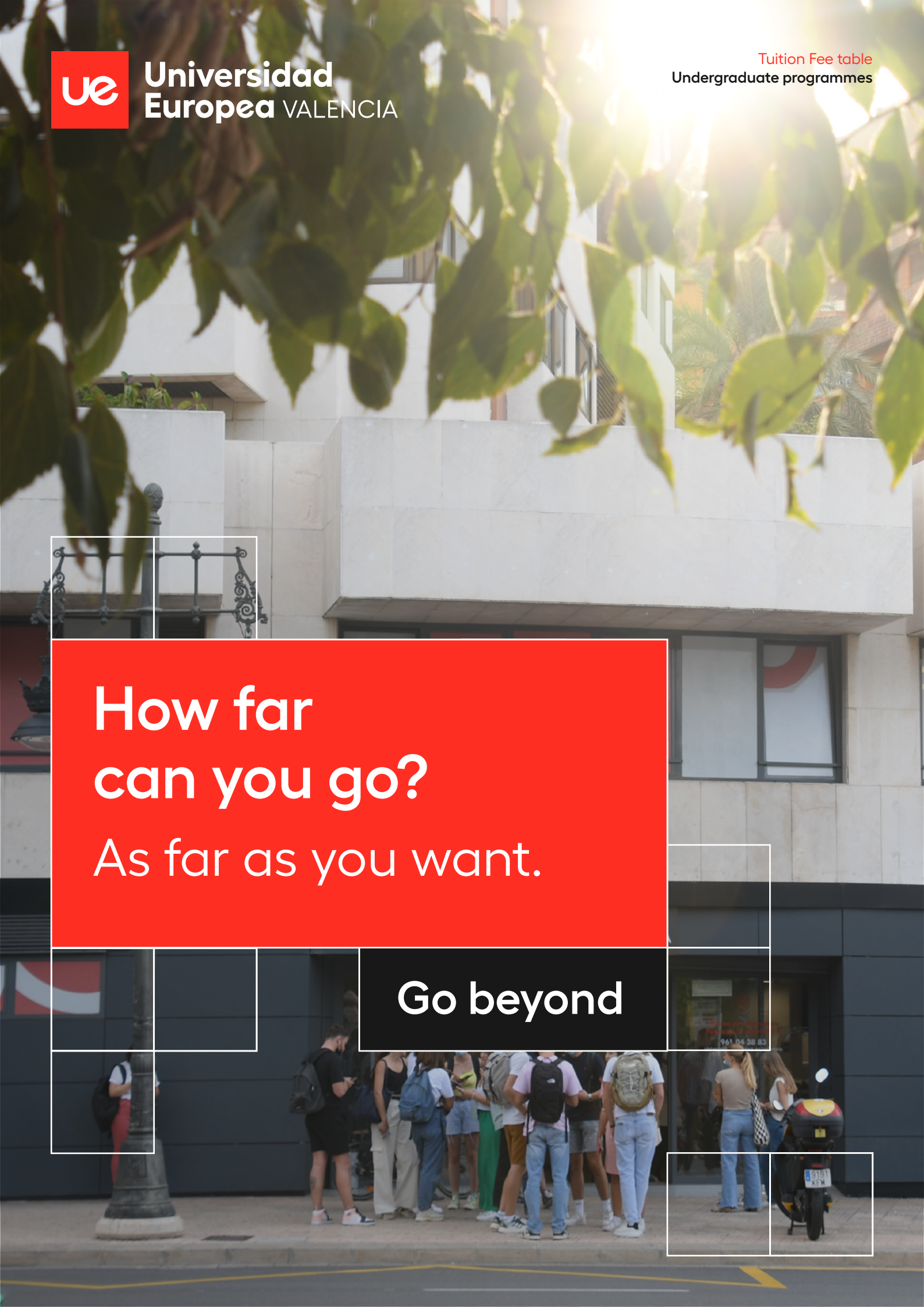


Universidad  
Europea VALENCIA

Tuition Fee table  
Undergraduate programmes

How far  
can you go?  
As far as you want.

Go beyond





**Universidad  
Europea** VALENCIA

## Admissions Department.

Universidad Europea de Valencia. Edificio A  
Paseo de la Alameda, 7 | 46010 Valencia.

[ads.valencia@universidadeuropea.es](mailto:ads.valencia@universidadeuropea.es)

